

Quick Installation Guide

JJ-1225SUSRI

(A) Hardware Installation:

1. Standard packaging contains:



2. Push the "LOCK" rightward to unlock the upper HDD door. The same for the lower HDD door.



3. Open the front door as the direction shown on the picture



4. Put the 1st HDD and 2nd HDD inside the cage slowly(See following picture)



5 · Push back the two HDD doors back until the HDD doors close to the cage(see following picture)



6. Push the LOCK leftward to lock the two HDD doors.



7. Connect the 15pin power cable and SATA data cable to the host connections



(B) How to Configure your Raid

Raid Setting Table

Display	RAID Status	RAID Config		
		4	2	1
0	BIG (span)	OFF	OFF	OFF
1	JBOD (single)	OFF	OFF	ON
2	FAST (strip)	OFF	ON	OFF
3	SAFE (mirror)	OFF	ON	ON
4	SAFE33	ON	OFF	OFF
5	SAFE50	ON	OFF	ON
6	RESERVED	ON	ON	OFF
7	GUI ONLY	ON	ON	ON

How to Build Raid JBOD mode?

a) Set the DIP Switch as following

Display	RAID Status	RAID Config		
		4	2	1
1	JBOD (single)	OFF	OFF	ON

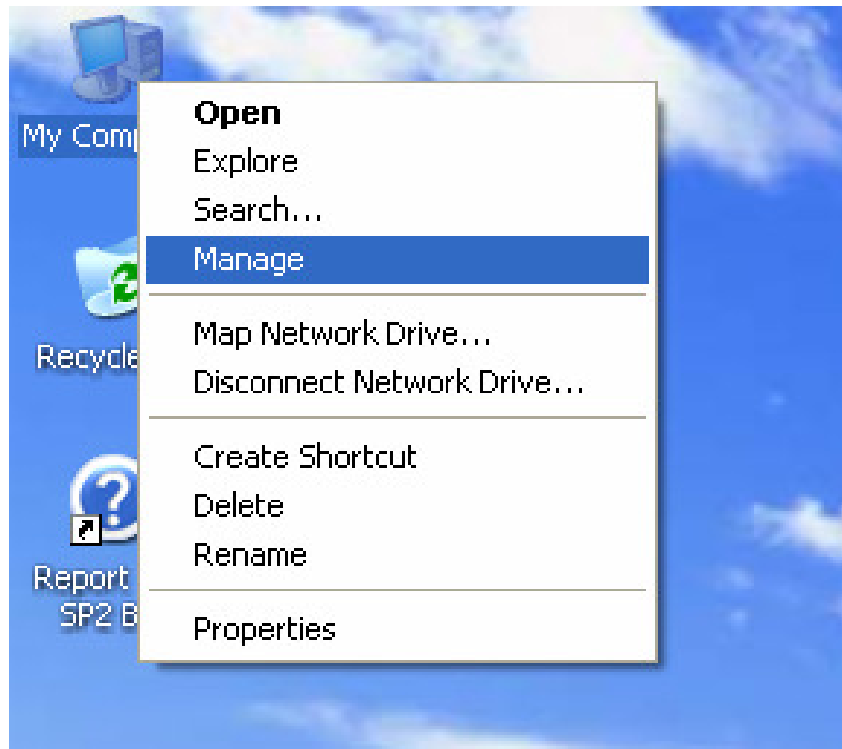
a. Setup Raid mode JBOD

1	JBOD (single)	OFF	OFF	ON
---	---------------	-----	-----	----

b. 將 7pin 電源線和 SATA 傳輸線插入相應接口



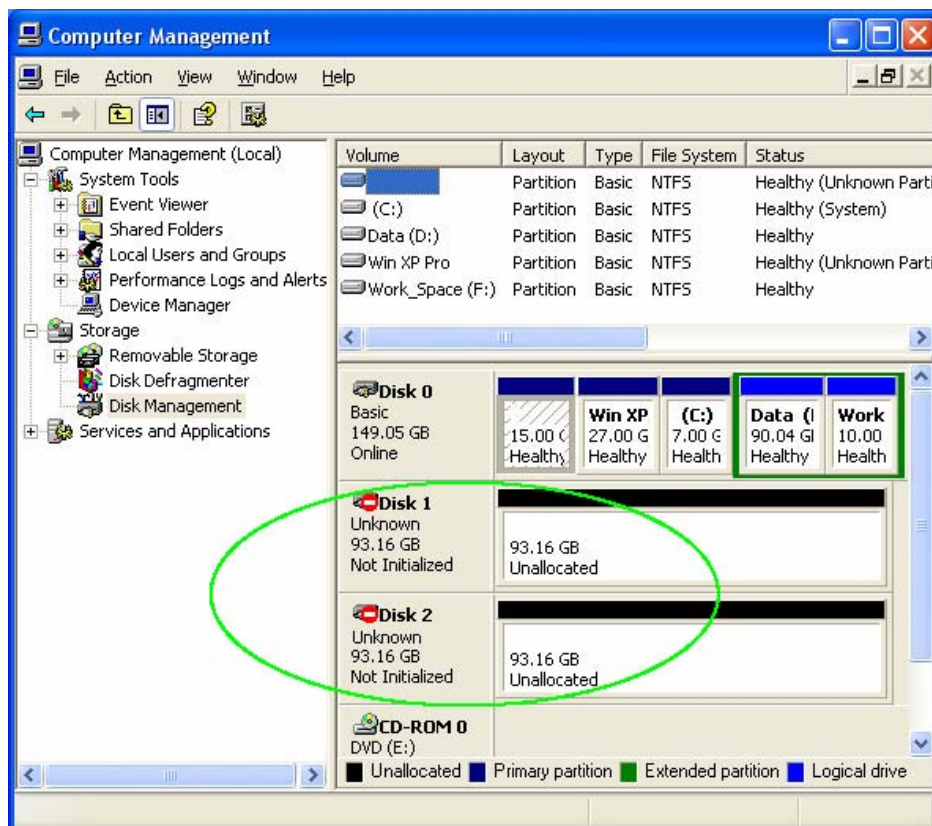
C) Click mouse right button on “My computer” and choose “manage” by clicking mouse left button



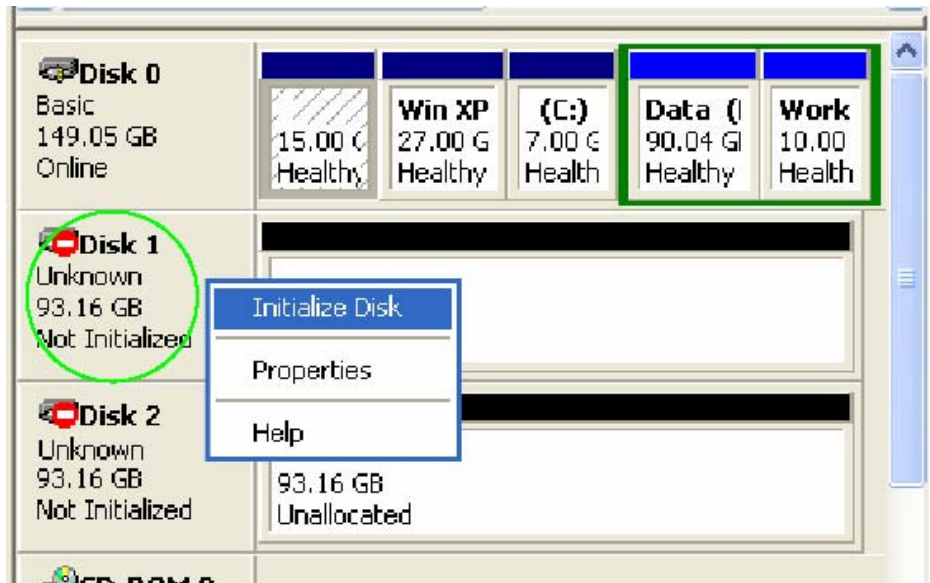
D) Choose “Disk Management” by clicking mouse left button



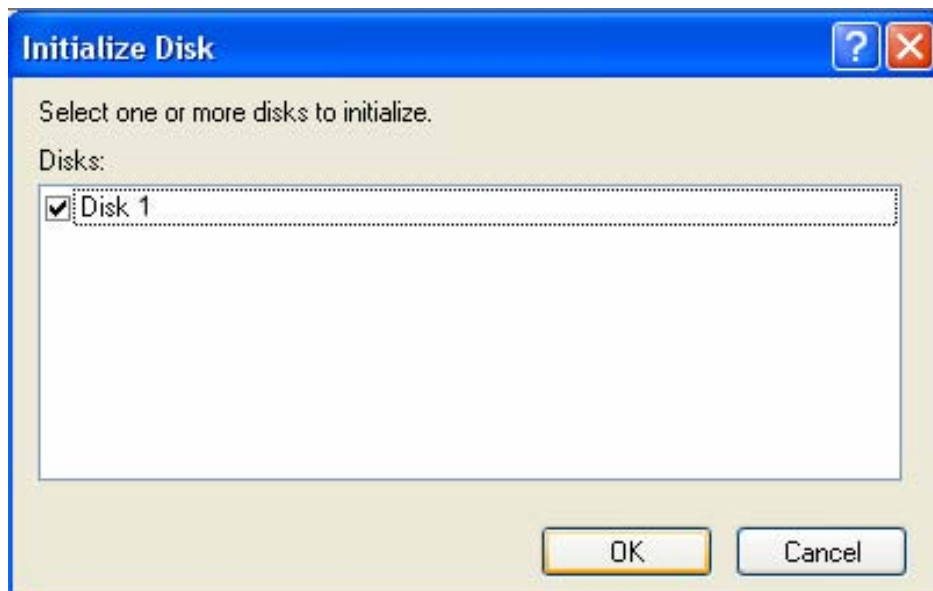
E) the “Disk Manage shows the hard disks are “Not Install” & “Unallocated”



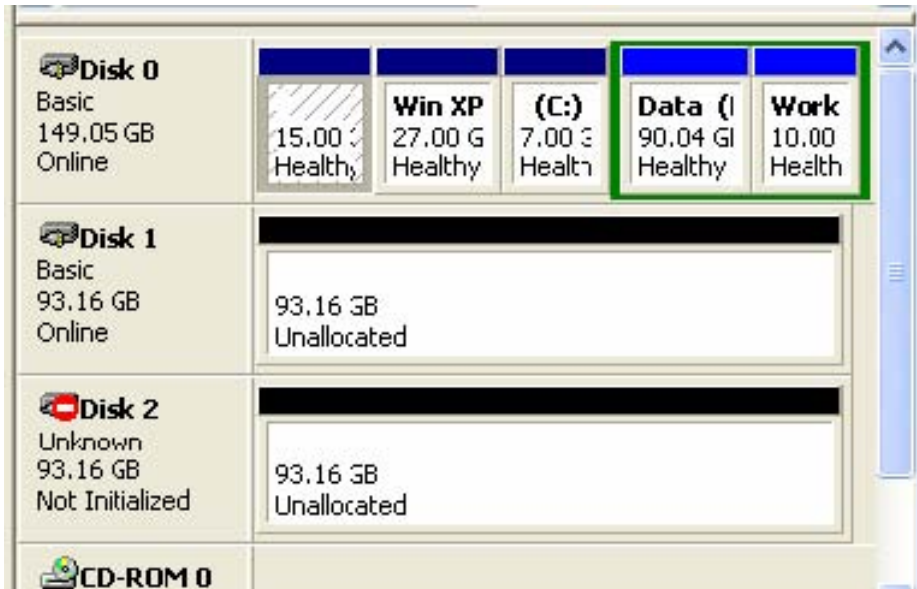
F) Click mouse right button over the red forbid sign and choose “Initialize Disk ”by clicking mouse left button



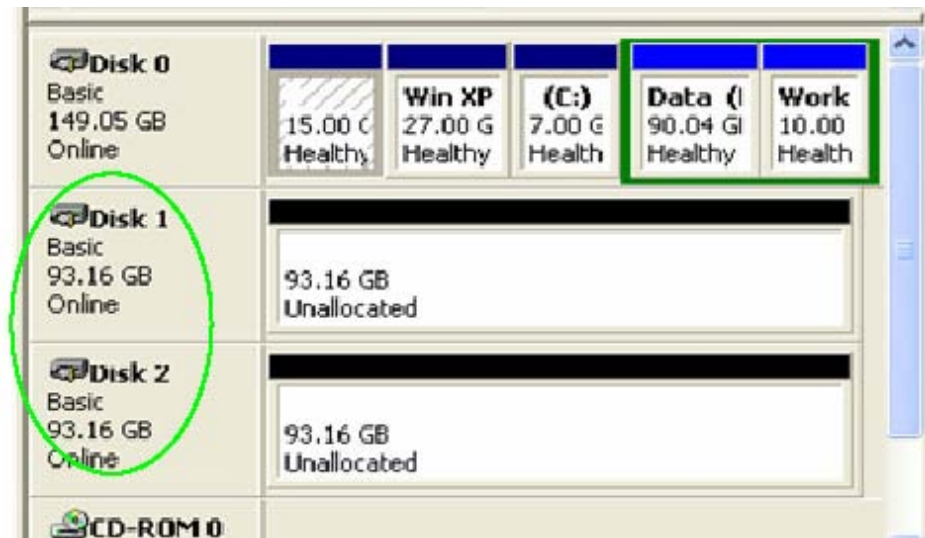
G) Press "OK"



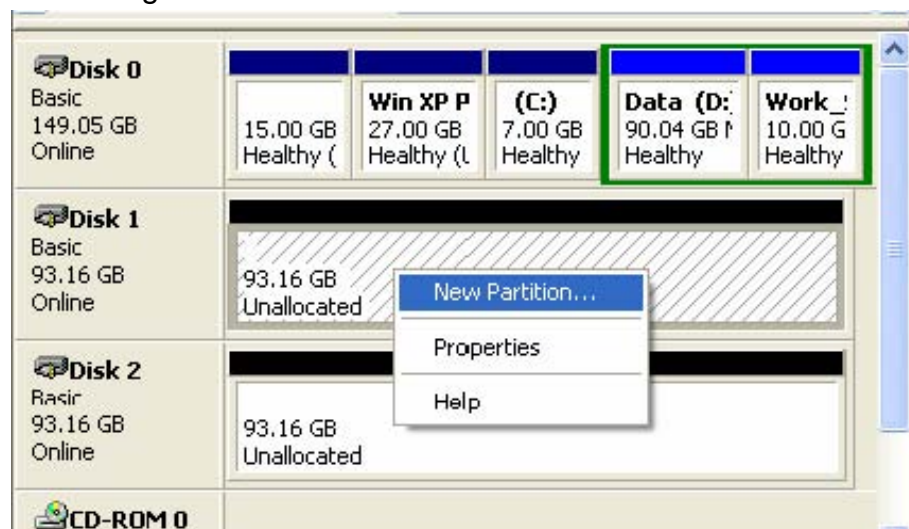
H) Refer steps g) & h) to Initialize Disk 2



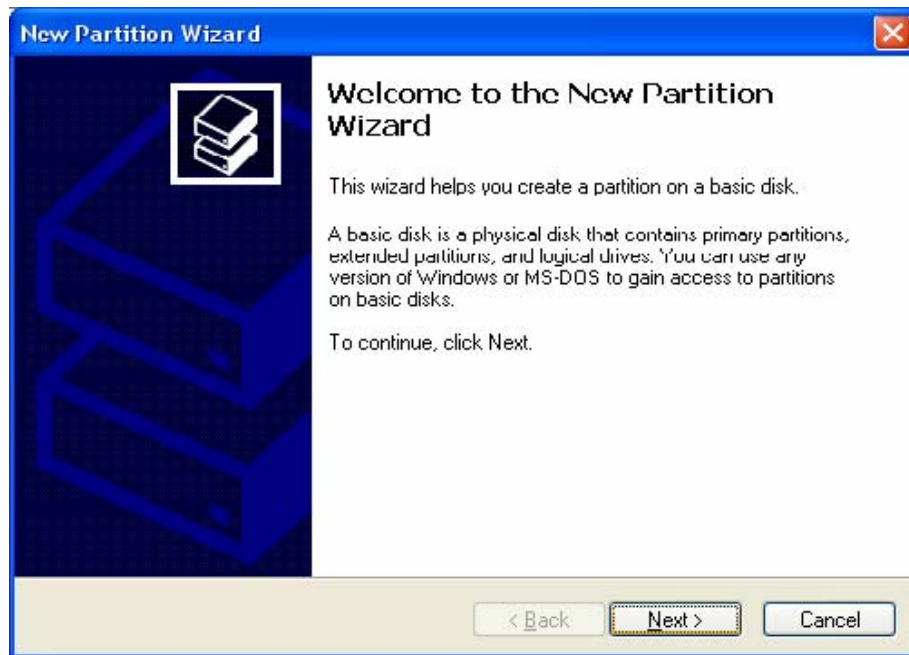
j. Hard disks will become “Online”



l) Click mouse right button and choose “New Partition”



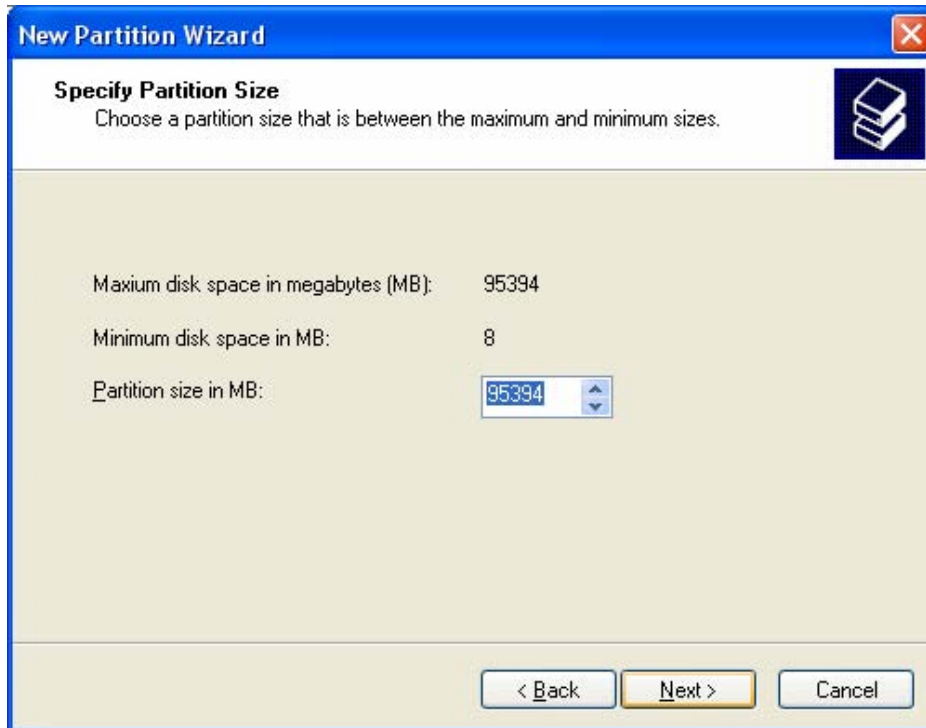
J) Choose "Next"



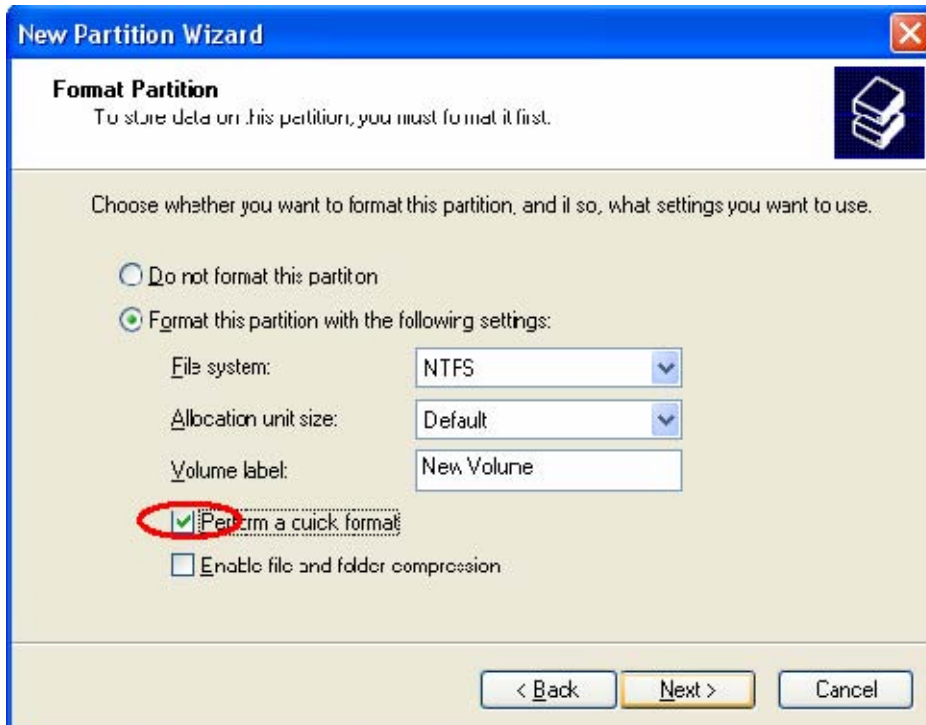
K) Choose "Next" again. (Suggestion: Tick "Extended partition" is recommended if data in use only)



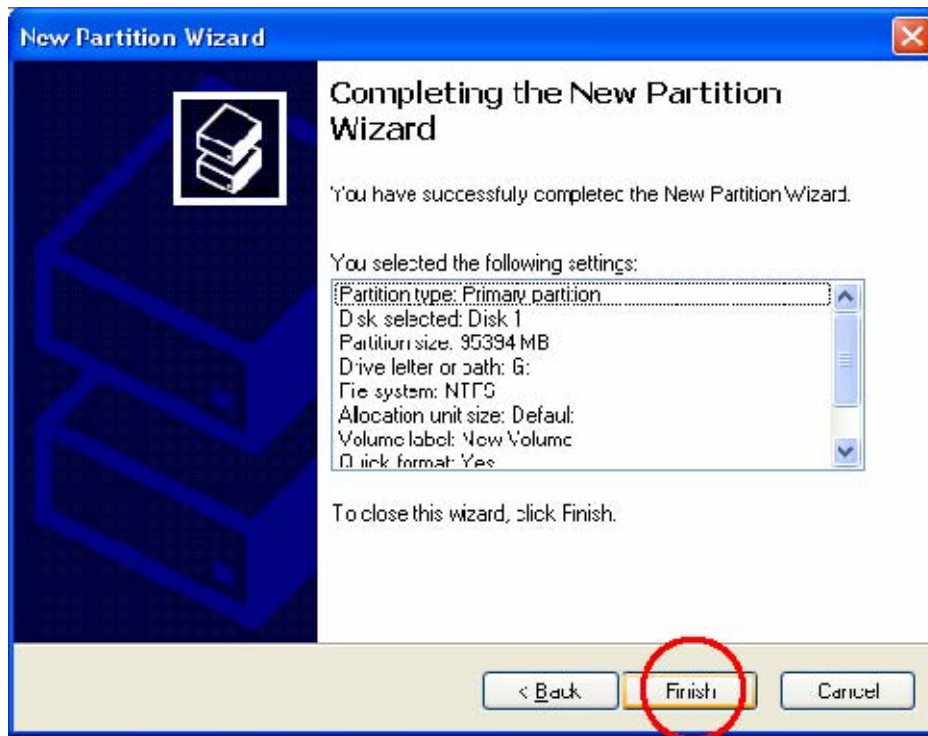
L) Set up partition size and click "Next"



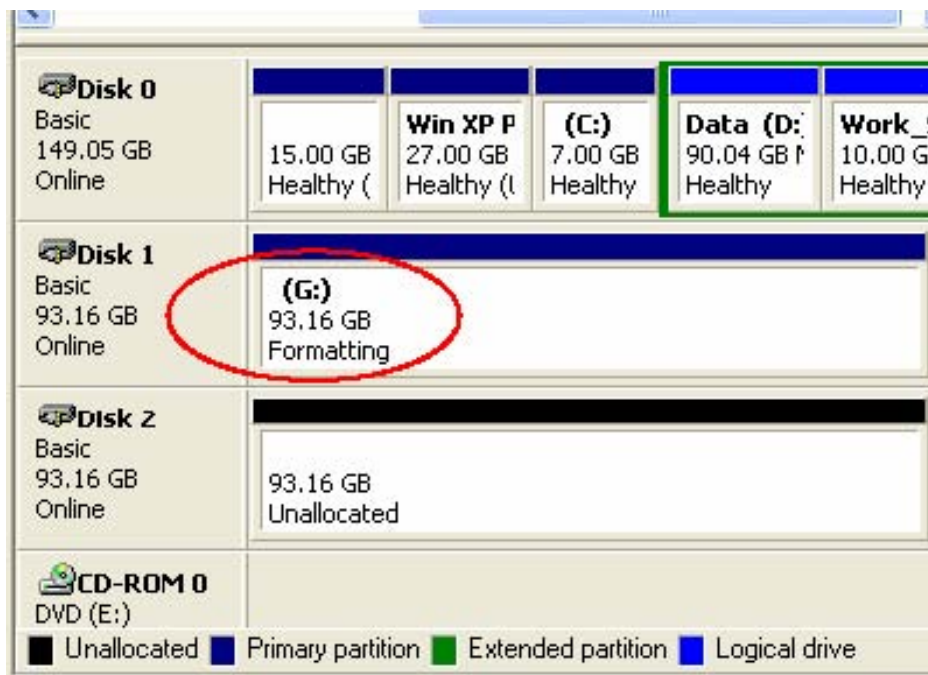
M) Tick "Quick format" and click "Next"



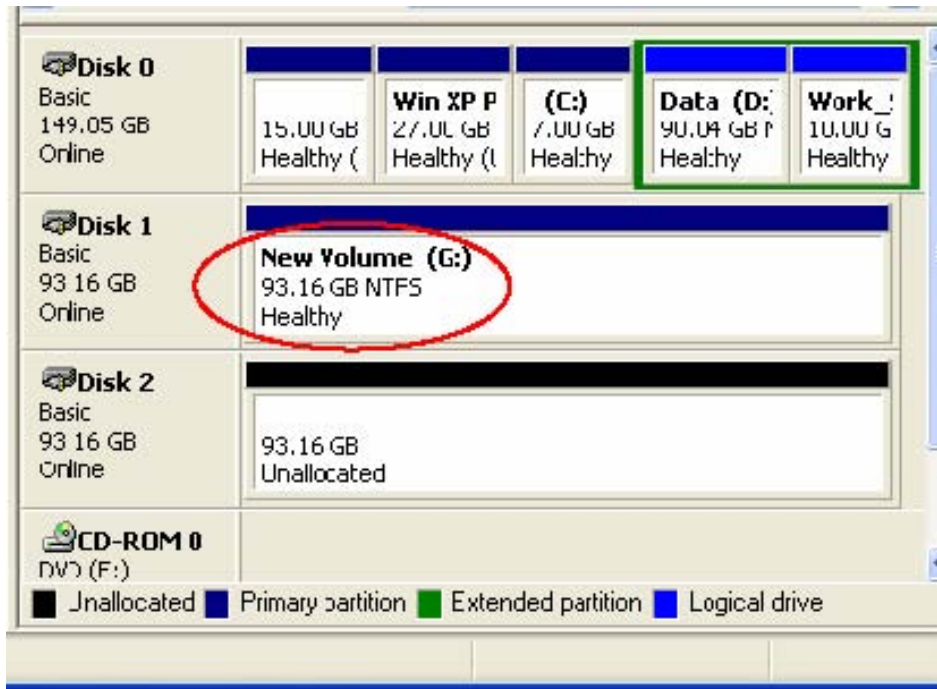
N) Click "Finish"



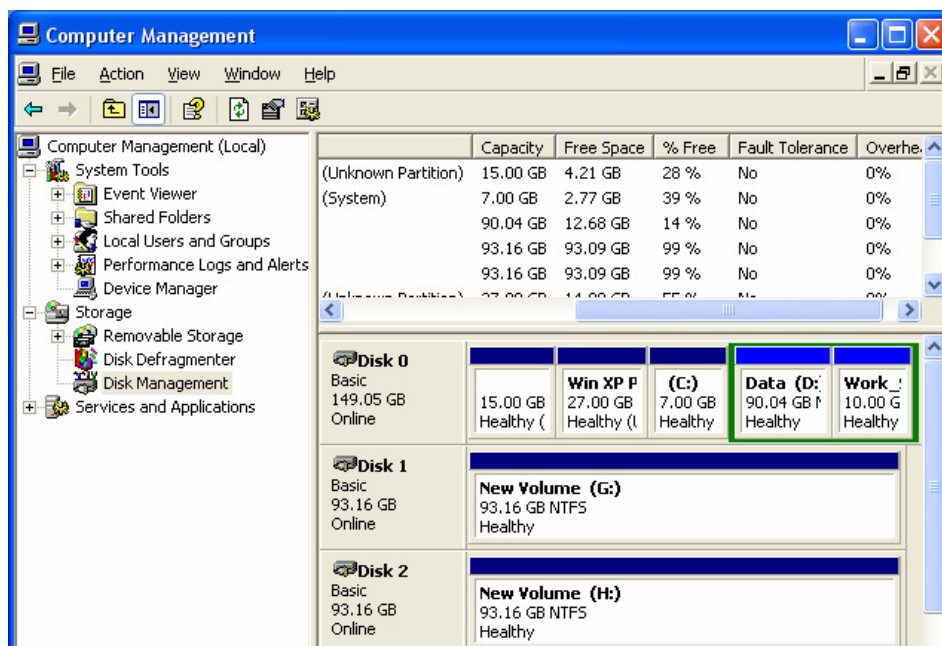
O) Disk Manager shows “Formatting”



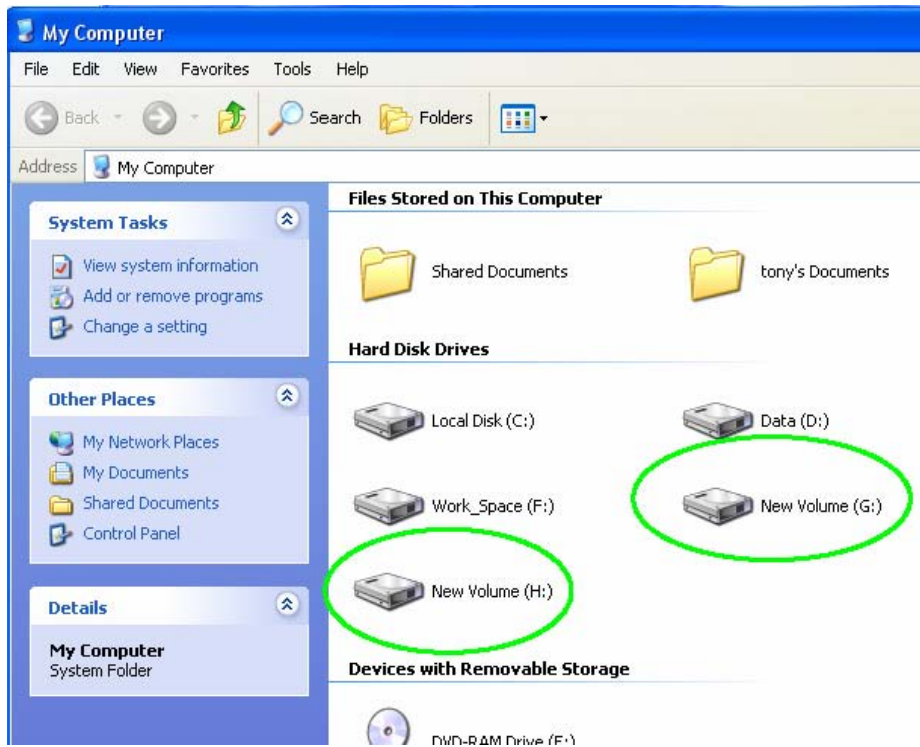
P) When format is finished , it shows “Healthy”



Q) Format the other hard disk by refer to steps k) ~s)



R) When format is finished, "My Computer" will shows two Physical hard disks



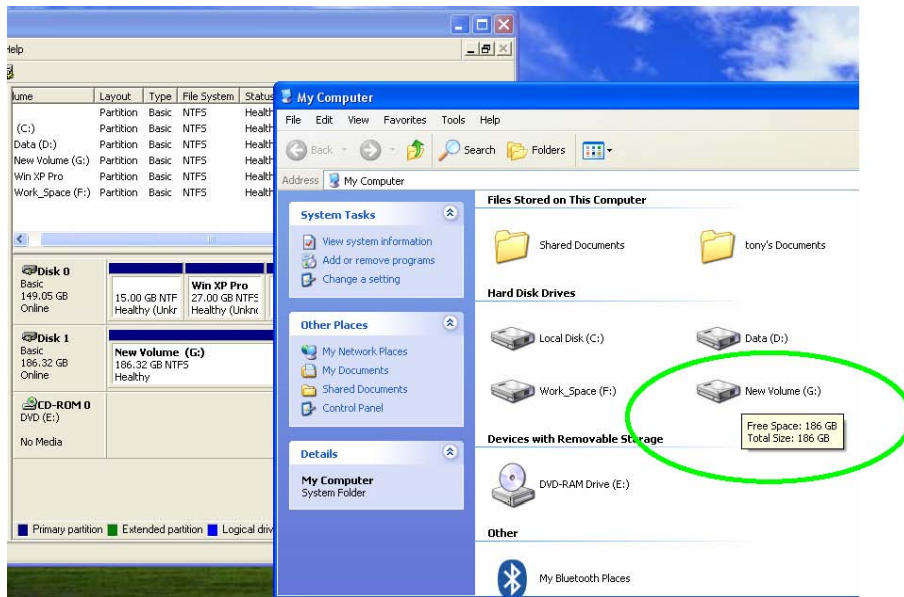
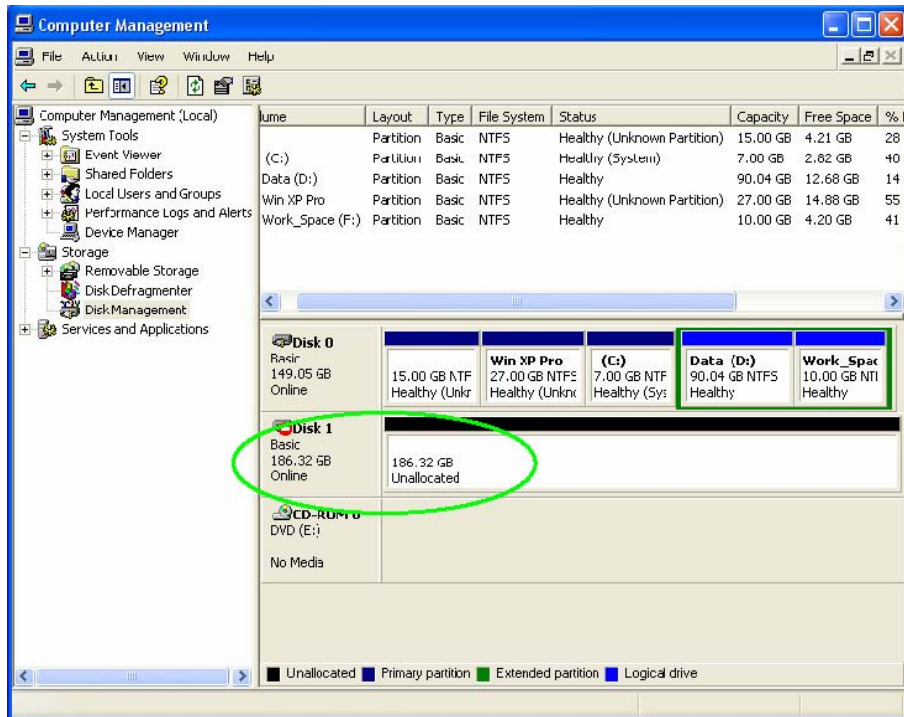
(B)How to build Raid Mode BIG or SAFE50

B-1 How to build Raid : BIG(Span)

Set the DIP Switch as following

Display	RAI D Status	RAID Config		
		4	2	1
0	BIG (span)	OFF	OFF	OFF

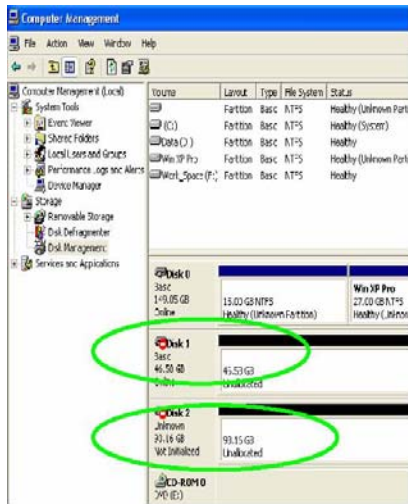
B1-1 Set the DIP switch as above and Refer to Step C) ~ R) to build the Raid BIG(Span) mode. This time you can see only 1 hard disk only (see following two pictures).



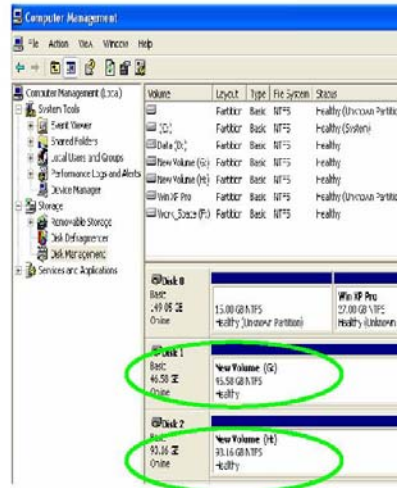
B-2 How to build Raid : SAFE50

B2-1 Set the DIP switch as following and Refer to Step C) ~ R) to build the Raid SAFE50 mode. This time you can see 2 hard disks (one is mirror hard disk and the other, BIG. See following two pictures.

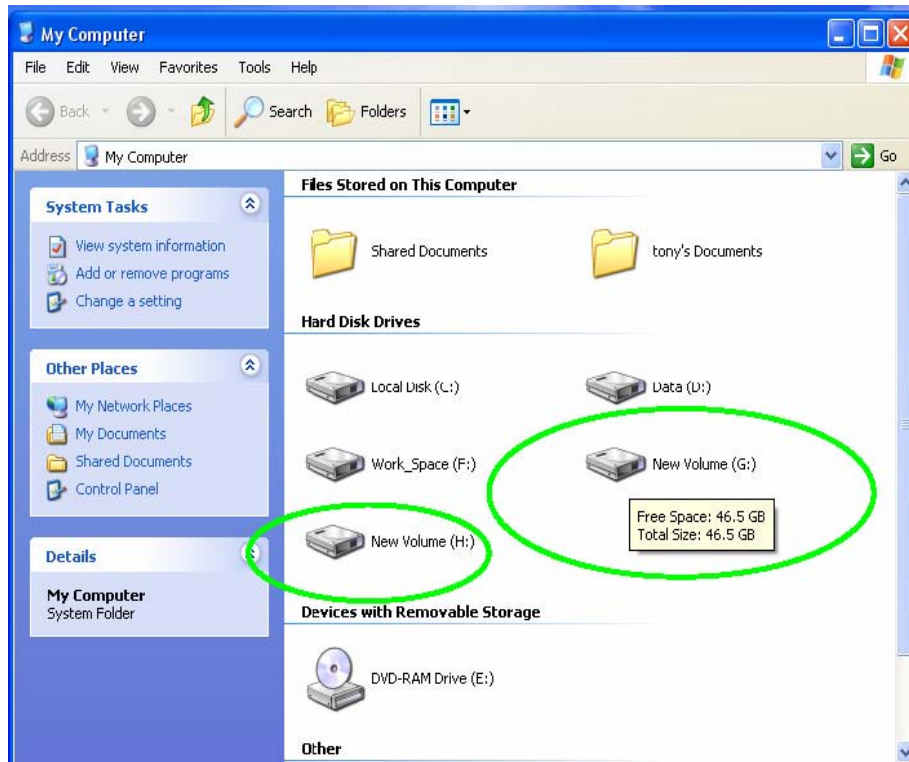
Display	RAID Status	RAID Config		
		4	2	1
5	SAFE50	ON	OFF	ON



B-2a See two hard disks



B-2b See two healthy hard disks



After Raid SAFE50 is finished, you can see two new hard disks, one is with Raid mirroring and the other is with Raid BIG.

Appendix .

If you are using ESATA, you will have to connect both mini USB and USBto 5v cables.

Trouble shooting

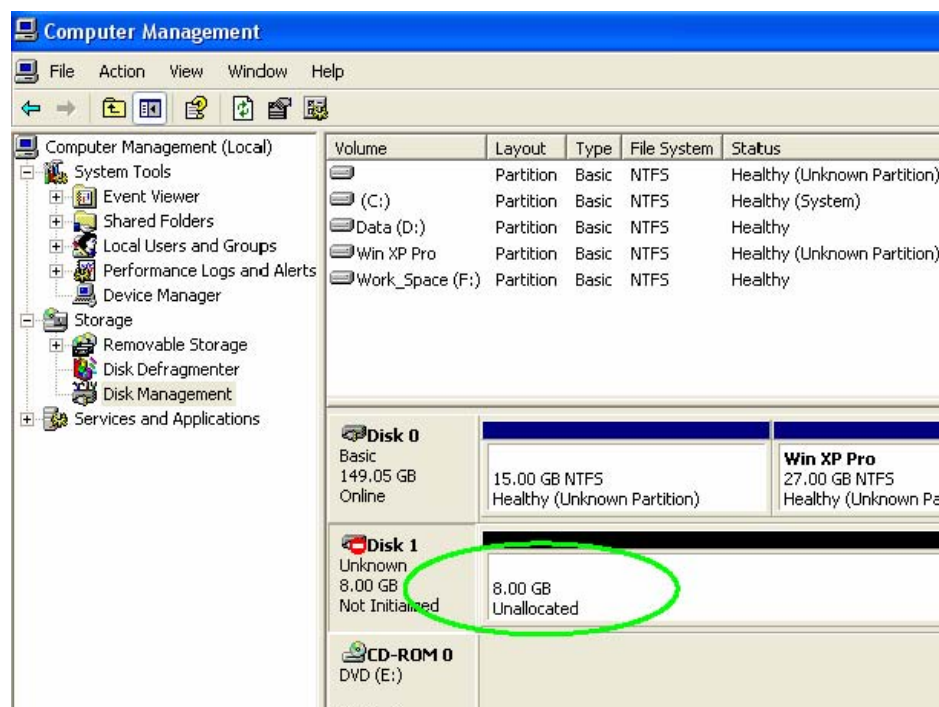
A> Can only see “8GB Unallocated”

Possible reasons are:

a-1 Does not install any hard disk.

a-2 First time installation and “Forgot to press “Change Mode” button once.

a-3 You have changed the Raid mode but forgot to press “Change Mode” button once.



B> Indicating wrong hard disk capacity or wrong hard disk numbers

b-1 Normally, it is because you have changed Raid mode setting but does not delete the previous Raid partition. In this case, you will have to delete the previous Raid partition on the hard disks and then, re-organize your hard disks again.

C> Hard disk LED indicators are blinking with green/red

c-1 This is because the Safe(Mirror) mode is under rebuilding. It usually occurred on your first time setting the Safe(Mirror) mode or you change the new hard disks.

c-2 The LED blinking will return to normal after rebuilding process finished.

c-3 While the Safe(Mirror) is under rebuilding or verifying, you can still use the hard disks, only the performance will be slower than expected.

D> Hard disk LED light on Red or Red blinking

d-1 It means the this hard disk is not put in or not connected properly or the put in hard disk is failed.

E> LED “SYS/Back up” indicating Red blinking

e-1 It means you already push the ‘Back up’ button and ready to proceed the back up.

F> LED “SYS/Back up” does not light onf-1 It means the hard drive health has problem under Safe(Mirror) Mode.

G> When power on, hear the ‘clicker’ sound is repeatingg-1 That means you has not connect the provided 2 USB cable connect to theports properly or the USB power socket does not supply enough power.

H> Can not see the correct device data under “57xx SteelVine Manager”h-1 You can click the upper left icon “File” & click “Scan Drives” from pop-upwindow to see it.